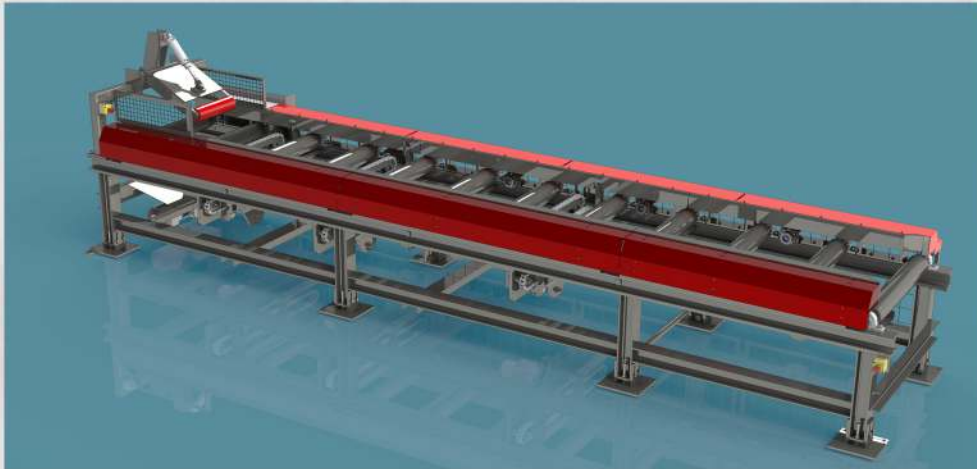


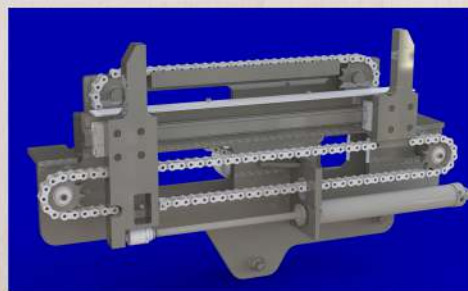
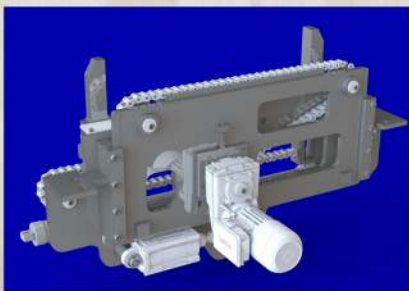
## loading conveyor DWS 3



minimum insertion length                      2000 mm  
 maximum insertion length standard            6000 mm  
 maximum insertion length on request        13000 mm  
 the height of the rollers from the ground    850 mm  
 power of the feed drive                            3 kW  
 the feed rate at the time of insertion to the saw is synchronized  
 with the feed rate of the saw.

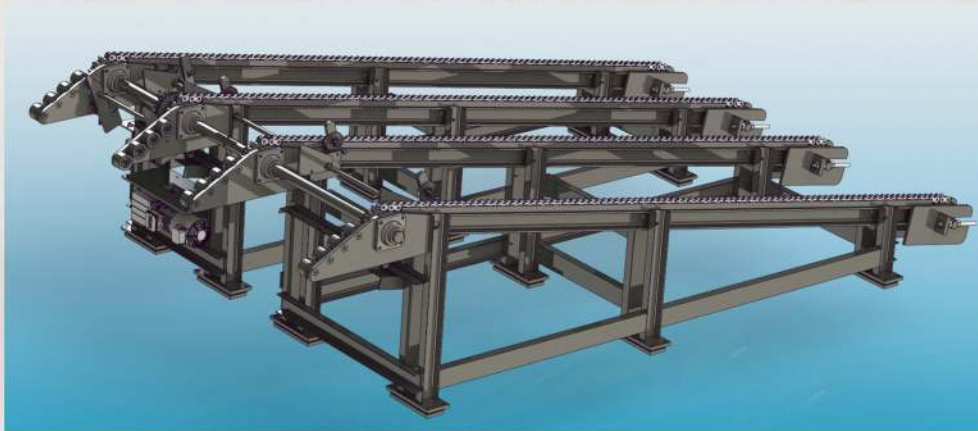
lumber can be moved from the front or from the side (both right and left).  
 allows either by centering the saw with centering pliers or by laser guidance  
 on the first right saw blade

the conveyor can be adapted for inserting triangular edged lumber - it is equipped  
 with a roller ruler that is aligned with the first right sawblade



**the centering loading conveyor substantially improves the safety of the work on rip saw**

## transversal conveyor DWS 4

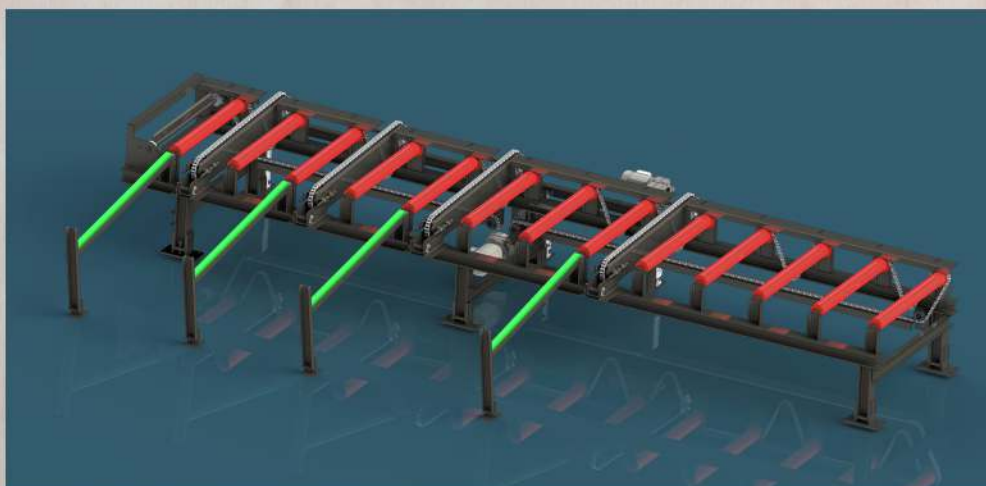


the minimum length of the workpiece usually	2 m
the maximum length of the workpiece usually	6 m
on request	13 m
the number of tracks usually	3 - 6
length of tracks - as needed	3 - 10 m
drive	1,5 - 3 kW

The conveyor serves for transverse prisms from frame saws, belt saws or disk prism saws to the DWS 3 loading conveyor. The conveyor is controlled from the panel of the loading conveyor



## output conveyor DWS 20



length	3 - 13 m
drive	2,2 kW
the feed speed is synchronized with the rip saw	
left and right versions	
number of transverse bars	2 - 6

## free run conveyors DWS 1



length	2 - 7 meters
width	750 mm
height	850 mm

dimensions can be modified by request

## loader DWS 2



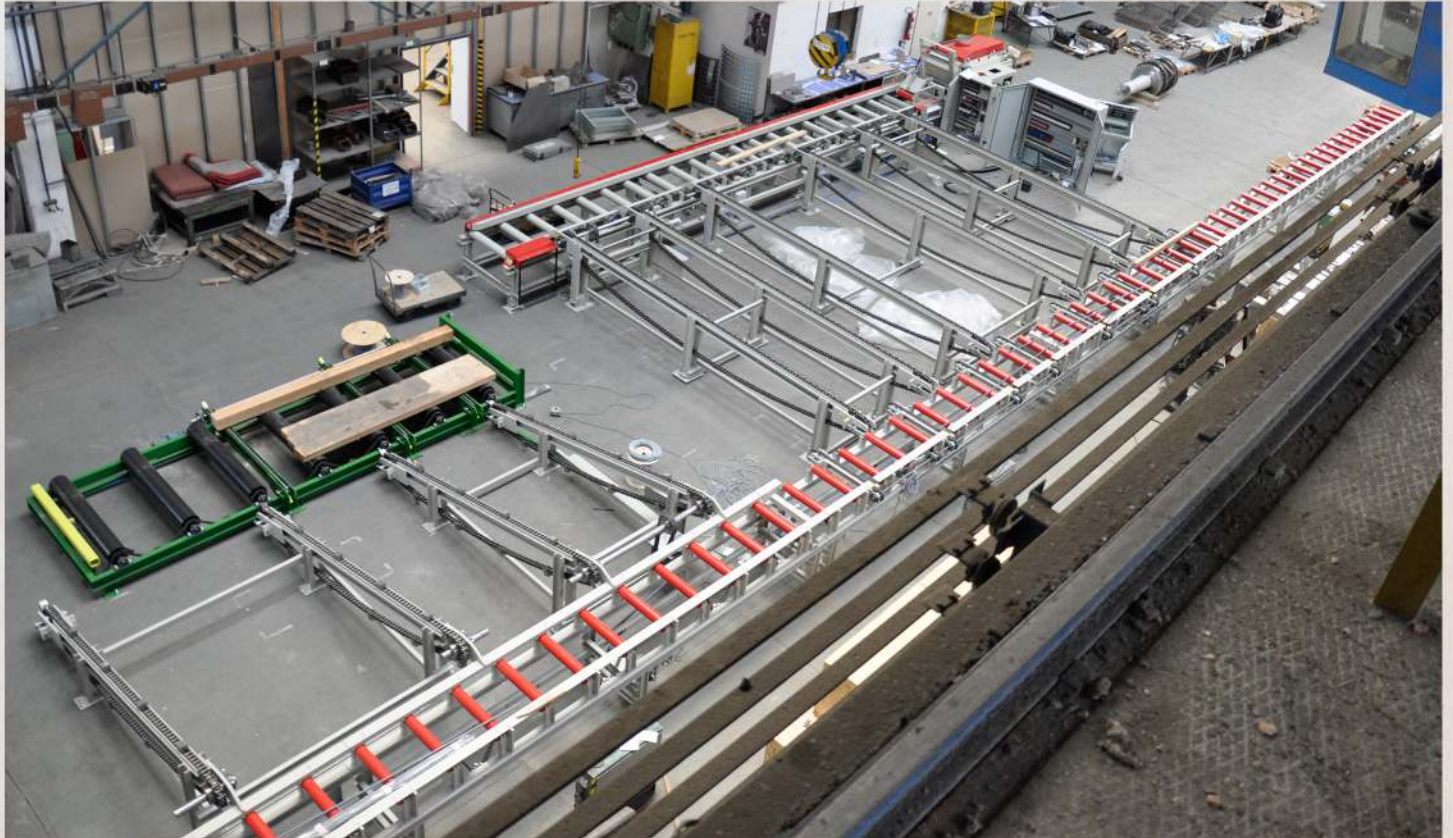
The loader is driven by a frequency controlled engine.  
The loading speed is synchronized with the feed speed of the saw.  
The pressure is pneumatically controlled.



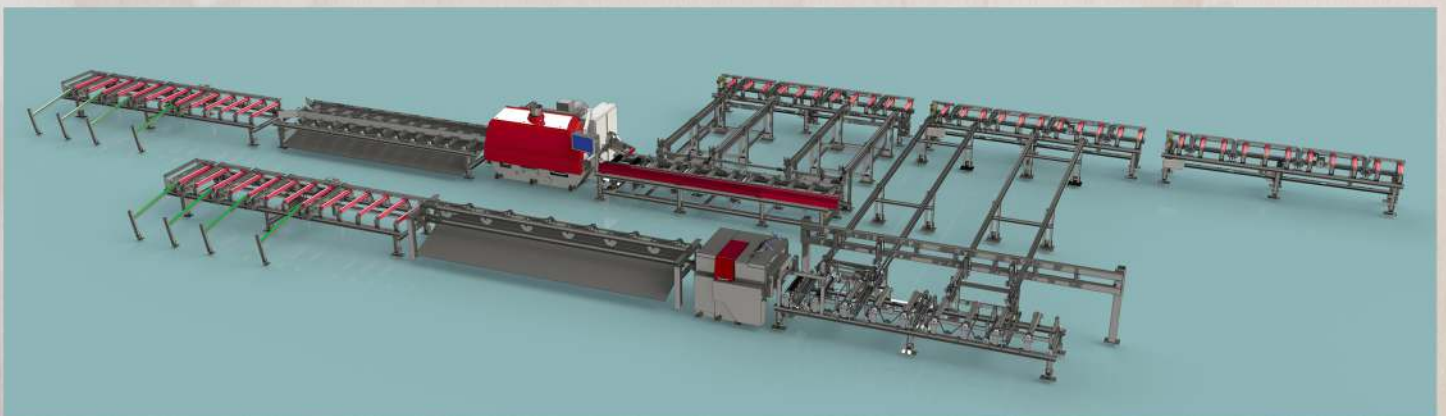
## light rip saw node



**Node for ripping prisms up to 10 m (connecting the frame saw with the rip saw).**



**Design of a complex ripping and edging node.  
The PWR 422 rip saw and the PWO 500 edgersaw are incorporated into the node.**



**TOS Svitavy, a.s.**  
Říční 2269/1D  
CZ- 568 02 Svitavy  
tel. 461 563 111  
e-mail: [tos@tos.cz](mailto:tos@tos.cz)

GPS: Loc: 49°45'39.25"N,16°28'14.53"E  
[www.tossvitavy.com](http://www.tossvitavy.com)

